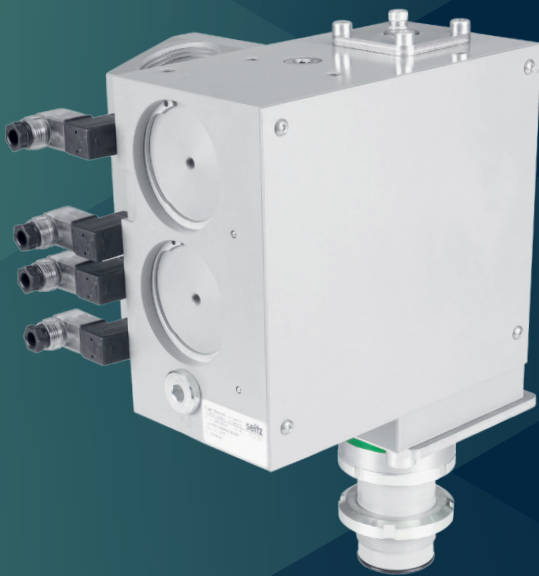


Blowing Unit CompactBlow

Seitz PET Blowing Unit CompactBlow is especially designed for economic bottle production.



Blowing Unit CompactBlow

Technical data

Function	P1 and P2: 2/2-way NC with integrated check valve REC: 2/2-way NO with check valve EXH: 2/2-way NO
Operating pressure	4 ... 40 bar
Pilot pressure	7.0 bar +0 / -0.5 bar
Orifice diameter	Pre-blow P1: Ø 16.0 mm Finish-blow P2: Ø 16.0 mm Recuperation REC: Ø 16.0 mm Exhaust EXH: Ø 18.0 mm
Port sizes	Pilot air supply: G 1/8" female Pressure gauge PG: G 1/4" female Compensation pressure CP: G 3/8" female Pre-blow P1: G 1/2" female Finish-blow P2: G 3/4" female Recuperation REC: G 3/4" female Exhaust EXH: G 1 1/4" female
Material	Unit body: Aluminium coated Pistons: Plastic, FDA compliant Grease: FDA compliant
Mounting	Any position
Media	Compressed air according to ISO 8573-1 – Particles: Class 2 – Pressure dew point: Class 4 – Oil content: Class 2
Media temperature	+5°C ... +40°C
Ambient temperature	+10°C ... +50°C
Pilot valves	24V DC, 2.5 W, IP65 Without manual override Female connectors included

Blowing Cylinder

Function	Double acting
Pilot valve	5/2-way spring return valve, 24 V DC, 5.4W, IP65 with internal air supply
Port air supply	For tube with outside diameter 12 mm
Pilot pressure	7.0 bar +0 / -0.5 bar
Piston stroke	33 mm

Performance data

Bottle size in liter	0.5	2.0
Pilot pressure PP in bar	6.5	6.5
Pre-blow supply pressure P1 in bar	10	10
Finish-blow supply pressure P2 in bar	36	36
Time in ms to pressure 1 bar (10% of P1)	22	30
Time in ms from P1 signal to pressure 9 bar (90% of P1)	62	158
Time in ms from P2 signal to pressure 12.6 bar (10% of P2)	40	48
Time in ms from P2 signal to pressure 33.4 bar (90% of P2)	72	141
Time in ms from REC signal to pressure 34.5 bar (90% of REC 36 to 21 bar)	35	40
Time in ms from REC signal to pressure 22.5 bar (10% of REC 36 to 21 bar)	61	100
Time in ms from EXH signal to pressure 18.9 bar (90% of EXH 21 to 0 bar)	71	77
Time in ms from EXH signal to pressure 2.1 bar (10% of REC 21 to 0 bar)	165	239

Above data are including the filling volume of the blowing piston and varies depending on piping, stability of air supply and silencer performance.

Performance data Blowing Cylinder

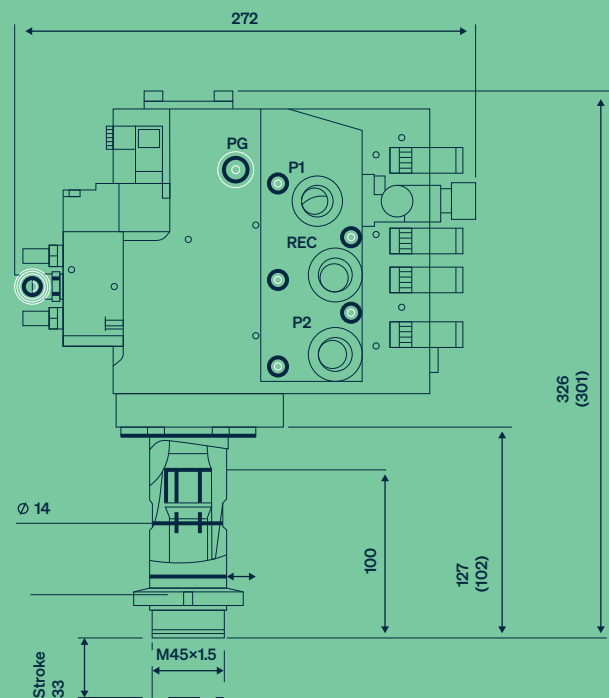
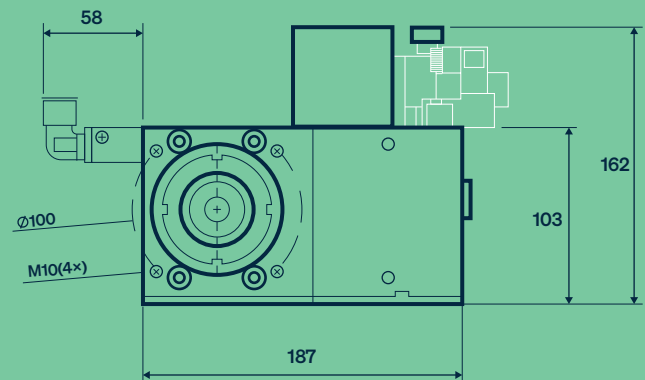
Times in ms from signal	
Downstroke	65
Upstroke	65

Above data varies depending on piping, stability of air supply and silencer performance.

Detailed dimensional drawings and 3D models are available on request, please contact us.

Order information

Part no.	Denomination	Piston length	Gross-Weight
258.123.00	CompactBlow	127 mm	12.0 kg/pc
254.605.00	Compact Blow	(102 mm)	10.4 kg/pc net weight



Eugen Seitz AG
Spitalstrasse 204
8623 Wetzikon
Switzerland
+41 44 931 80 80
info@seitz.ch

Seitz Valve Technology (Shanghai) Co., Ltd.
Room 910, Building No 67
Hong Cao Rd 421
200233 Shanghai
People's Republic of China
+86 21 3363 3880
information@seitz.cn